



Highwood Primary School  
 Fairwater Drive  
 Woodley  
 Reading  
 Berkshire  
 RG5 3JE

Tel: 0118 926 5493

Email: [admin@highwood.wokingham.sch.uk](mailto:admin@highwood.wokingham.sch.uk)  
[www.highwood.wokingham.sch.uk](http://www.highwood.wokingham.sch.uk)

Head Teacher: Mr M Hickey NPQEL, BA(Ed), PE QTS

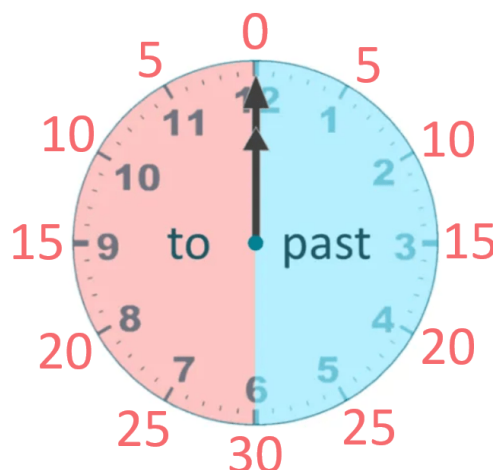
13 May 2025

Dear Parents/Guardians,

Our next topic in maths is time. We will be learning to read the time using an analogue clock. Please continue to practice telling the time with your child/children.

Year 2 national curriculum objective:

- tell and write the time to five minutes, including quarter past/to the hour and draw the hands on a clock face to show these times
- know the number of minutes in an hour and the number of hours in a day.

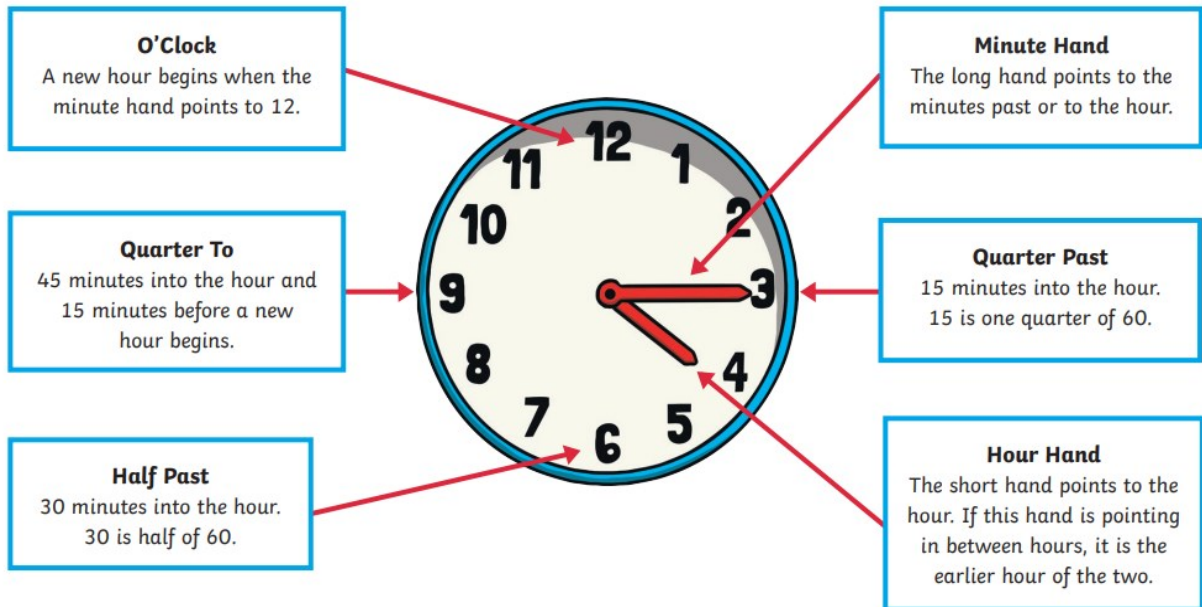


60 seconds = 1 minute

60 minutes = 1 hour

24 hours = 1 day

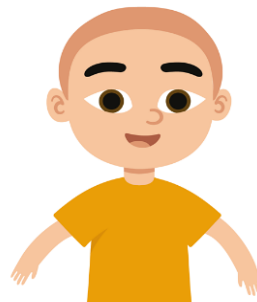
7 days = 1 week



## What is quarter past?

When the minute hand of a clock has moved from 12 and travelled a quarter of the way around the clock to point at 3, this is **quarter past** the hour.

The hour hand also moves and is a quarter of the way from one number to the next one.



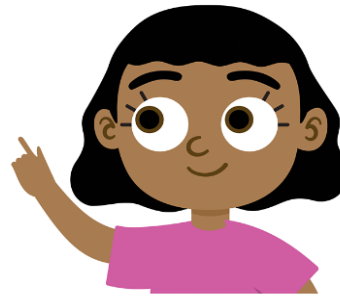
On this clock, the minute hand points 3 so it is quarter past.

The hour hand points a quarter of the way past 7 so it is quarter past 7.

## What is quarter to?

When the minute hand of a clock has moved from 12 and travelled three quarters of the way around the clock to point at 9, this is **quarter to** the hour.

The hour hand also moves and is three quarters of the way from one number to the next one.



On this clock, the minute hand points to 9 so it is quarter to.

The hour hand points three quarters of the way past 4 so it is quarter to 5.

## When is it 'half past' the hour?

When the minute hand of a clock has moved from 12 and travelled halfway round the clock to point at 6, this is **half past** the hour.

The hour hand also moves and is halfway from one number to the next one.



On this clock, the minute hand points to 6 so it is half past.

The hour hand points halfway past 8 so it is half past 8.

If you have any questions, please feel free to contact us.

Thank you

The Year 2 team