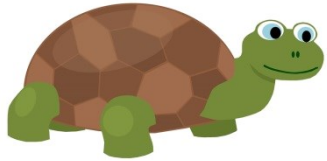




Highwood Primary School



Perseverance



Creativity



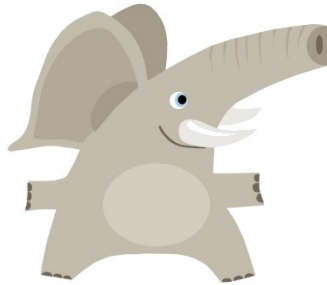
Independence



Curiosity



Teamwork



Reflection

Your children are not casual guests at our school. They have been loaned to us temporarily for the purpose of helping them learn and instilling a foundation of values on which their future lives will be built.

New to F2 Parent Meeting



Overview

- School Context
- School's Values, Vision and Mission statements.
- Learning Behaviours
- Attendance and Punctuality
- UIFSM – Free school meals
- Family Centre
- EYFS information
- Questions



Inspection of Highwood Primary School

Fairwater Drive, Woodley, Reading, Berkshire RG5 3JE

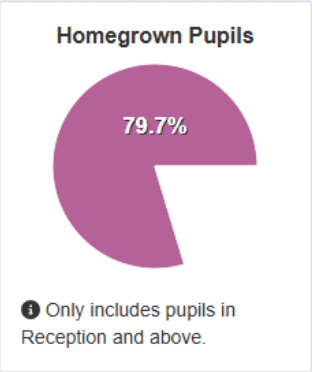
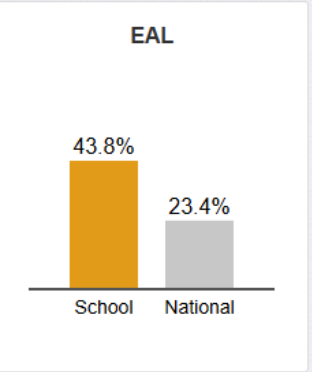
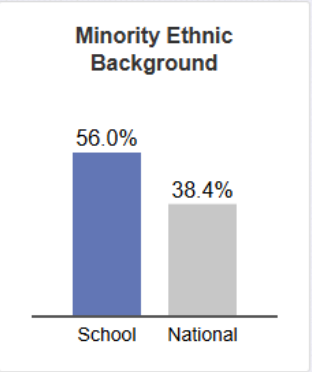
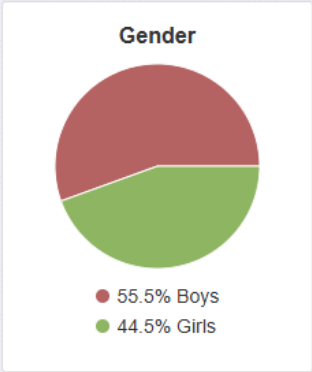
Inspection dates: 1 and 2 December 2021

Overall effectiveness	Good
The quality of education	Good
Behaviour and attitudes	Outstanding
Personal development	Good
Leadership and management	Good
Early years provision	Good
Previous inspection grade	Requires improvement



2024-2025: 461 Pupils

Print



Highwood Primary School



Churchend Primary Academy

"Our educational journey embraces values of care, respect, positivity, aim high, resilience and responsibility. Our learning environment is inspiring."

HEADTEACHER: MRS LOU SLOCOMBE



Hawkedon Primary School

"Hawkedon's vision is for children to develop into confident, caring, lifelong learners and to ensure that we provide all opportunities possible."

HEADTEACHER: MRS ELAINE HUGHES



Highwood Primary School

"Our ethos is to focus on every child being happy at Highwood; to help them make progress and achieve their own ambitions."

HEADTEACHER: MR MATT HICKEY



Hillside Primary School

"Whilst having high expectations for everyone, Hillside works hard to ensure it develops and nurtures the whole child, inspiring and encouraging."

HEADTEACHER: MR DAN PEARMAN



ORCHARD
LEARNING ALLIANCE
WHERE EVERYONE THRIVES



South Lake Primary School

"At South Lake Primary School we are committed to equity and justice. We aim for every pupil to fulfil their potential, no matter what their needs."

HEADTEACHER:
MRS ANTOINETTE BUTLER-WILLIS



Waingels College

"We are proud to be part of an Alliance that is committed to transforming the life chances for all."

HEADTEACHER: MRS LINDSEY HUMBER



Willow Bank Infant School

"We are very proud of our vision that every child should get an hour of play every day with no exceptions."

HEADTEACHER: MRS NICKI TAYLOR-DICKENS



Willow Bank Junior School

"Our goal is to equip our pupils with the knowledge and skills they need for the next part of their education journey and for wider life."

HEADTEACHER: MRS ANNIE HANSON

Values

(The things we truly believe in for **everyone** involved with Highwood)

- Celebrating Diversity
- Continual Improvement
- Pride
- Happiness
- Trust
- Respect



Vision Statement

(What we want to achieve for our children at Highwood)

At Highwood, we believe that every child should be treated as an individual.

Our children will see themselves as learners and will understand how they become the best they can be in all aspects of life.

Highwood children will be ready for our ever changing world.



Mission Statement

(How we will achieve our vision)

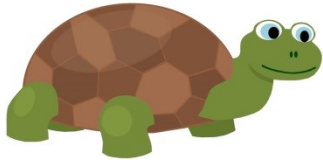
Our children will be exposed to a climate of possibility, which will enhance their excitement and passion for imagination and creativity.

Through our rich and relevant curriculum, we will light the spark of curiosity in our children developing a thirst for learning.

We will help improve the learning behaviours needed for our children to be successful and ensure they are motivated to continually improve.



Learning Behaviours



Perseverance

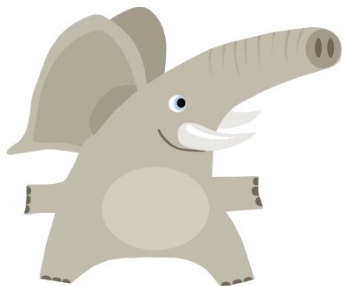


Creativity



Teamwork

- We are passionate about learning and actively teach children 'How to learn'
- *EYFS – Characteristics of effective learning.*
 - *Play and exploring – engagement*
 - *Active learning – motivation*
- *Creating and thinking critically - learning*
- Not just for our children, but important for our whole community.



Reflection



Independence



Curiosity

Keeping in touch with progress

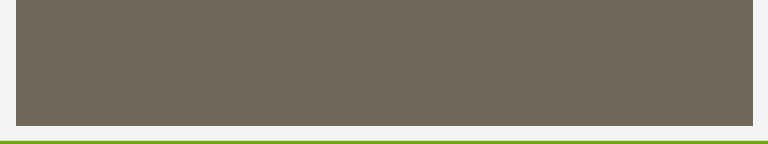
- Welcome any time
- Information workshops – YouTube channel
- SPLAT / Assemblies
 - Autumn
 - Spring
 - Summer
- Wow moments – sent to parents via Seesaw app.
- Mid-year reports
- One Page end of year report.
- Parent's evenings
- Open days



Attendance and Punctuality

- No term time holidays will be authorised.
- Leave of absence requests must be requested prior to the event or they will be unauthorised. This includes religious festivals.
- Only exceptional circumstances for leave will be considered and this is at the discretion of the Headteacher.
- There may be cases where a significant event is authorised but not the extended holiday either side.
- Members of the SLT meet every 3 weeks and all children under 90% attendance (or at risk of falling below 90%) are discussed. We monitor the frequency, date patterns, sibling patterns, illnesses and amount of full weeks.
- We also discuss children who have regular lateness.
- It is vital that we develop good attendance habits during Foundation Stage.





Parent(s) / Carer(s) Name
Parent(s) / Carer(s) Address

Dear.....

PUPIL'S NAME

DOB:

YEAR GROUP

I refer to the Leave of Absence you recently requested and am writing to inform you that I am unable to agree to this request for your child to miss school in order to go on holiday. Our policy states that leave of absence is granted if the circumstances are exceptional. To inform the school's decision about exceptionality, we use the guidance set out by the National Association of Headteachers (NAHT). The NAHT suggests the fundamental principles for defining 'exceptional' are:

- rare
- significant
- unavoidable
- short

Should you decide to go ahead with this holiday and your child misses 5 days of schooling, this information will be passed to our Education Welfare Officer and a Penalty Notice may be issued without further warning. Payment of a Penalty Notice within 21 days is £80 per parent, per child; between 22 and 28 days it increases to £160. Penalty notices are issued to each parent per child. More details can be found on the Wokingham Council website or from the Education Welfare Service. If the fine is not paid the matter will be taken to court.

I very much hope you will reconsider your plans to take a holiday during term time thereby ensuring [pupil's name] does not miss any of his education.

Yours sincerely,

Matt Hickey
Headteacher
Highwood Primary School
cc. Education Welfare Service



**Highwood
Primary School**

Universal Infant Free School Meals

- UIFSM – What does it mean?
- Pupil Premium
- Paperwork still needs completing for schools to access the funding.



Family Centre & Family Support Worker

- My role in school is to provide support, advice and information to the families within our school community.
- I can help you with any worries that you may have in relation to your child's education, behaviour and wellbeing.
- I am also here as someone to talk to if you need it.





Parenting Support



Family Support



Safeguarding



SEN support



Wellbeing support



Referrals and signposting



Home visits



Questions and queries



Attendance support



Advice



Adult learning



Coffee mornings

Parent Gym

Week 1



Chat

Get you and your child talking and listening in a positive way, every day.

Week 2



Love

Boosting your child's confidence, with a balance between closeness and independence.

Week 3



Behave

Bring calm and to your family with rules and routines that really work.

Week 4



Care

Keep yourself and your family healthy and happy with good sleep, eating and exercise.

Week 5



Discover

Help develop healthy learning habits with your child, including managing screen time.

Week 6



Together

Keep your family feeling happy, supported and loved.

+ **Booster session** (3 months after the 6th week)

Discuss on going challenges, refresh on key techniques and catch up with coach and the group.

parentgym
FOR PARENTS WHO CARE



Highwood
Primary School

EYFS Curriculum

The EYFS curriculum is divided into 7 areas; 3 Prime areas and 4 specific areas:

3 Prime Areas:

1. Communication and language

- Listening, attention and understanding
- Speaking

2. Physical Development

- Gross-motor skills
- Fine-motor skills

3. Personal Social and Emotional Development

- Self-regulation
- Managing self
- Building relationships

EYFS Curriculum

4 Specific areas:

1. Literacy

- Comprehension
- Word reading
- Writing

2. Mathematics

- Number
- Numerical patterns

3. Understanding of the world

- Past and present
- People, culture and communities
- The natural world

4. Expressive Arts and designs

- Creating with materials
- Being imaginative and expressive

End of year Assessment

There are 17 Early learning Goals (ELG). At the end of the year your child will be assessed against each ELG. There are 2 grades:

- Emerging
- Expected



Good Level of Development - GLD

At the end of the year your child will be assessed against each ELG. For your child to reach a GLD they must achieve the expected level (in every strand) in all of the prime areas and first 2 specific areas:

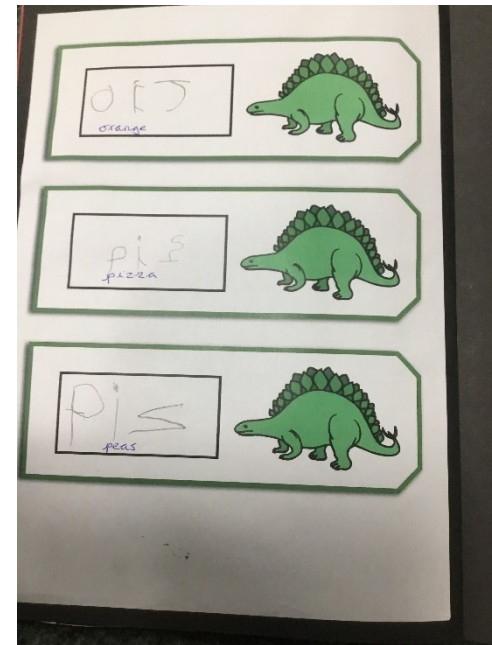
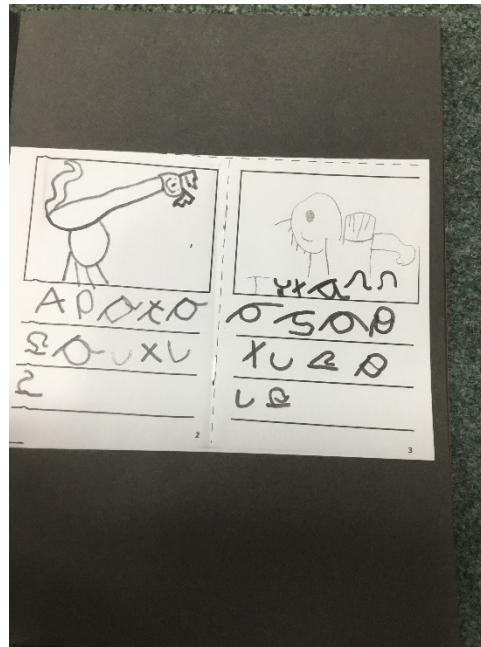
- Communication and Language
- Physical Development
- Personal, social and emotional development
- Mathematics
- Literacy



Literacy ELGs

Writing

- Write recognisable letters, most of which are correctly formed;
- - Spell words by identifying sounds in them and representing the sounds with a letter or letters; -
- - Write simple phrases and sentences that can be read by others.



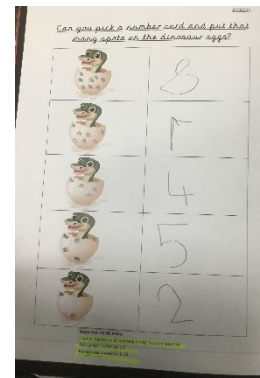
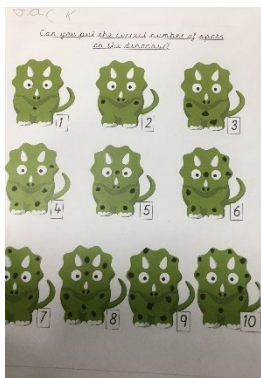
Mathematics ELGs

Numbers

- - Have a deep understanding of number to 10, including the composition of each number;
- - Subitise (recognise quantities without counting) up to 5;
- - Automatically recall (without reference to rhymes, counting or other aids) number bonds up to 5 (including subtraction facts) and some number bonds to 10, including double facts.

Numerical pattern

- Verbally count beyond 20, recognising the pattern of the counting system;
- - Compare quantities up to 10 in different contexts, recognising when one quantity is greater than, less than or the same as the other quantity;
- - Explore and represent patterns within numbers up to 10, including evens and odds, double facts and how quantities can be distributed equally.



Topics

We combine the children's interests with engaging topics to help the children develop in all areas of the curriculum.

Next Year Our topics are:

Autumn term: Could dinosaurs live in Woodley?

Spring term: How is the world filled with colour?

Summer term: How do local heroes help us?

Your child's key person...

- will greet you and your child with a smile.
- will be your first point of contact.
- will keep records on your child's learning and development.
- will talk to you to find out about your child's interests at home.
- will use your child's interests when planning for their learning.



The school day



- We open the doors at 8.35am and close them at 8.45am. Please go through the office after this time.
- Lunch time starts at 12:00 and finishes at 1.00.
- School finishes at 3.15pm. If another adult is collecting your child, please inform us in the morning. We are unable to release children unless we have verbal or written permission directly from a parent.
- Breakfast club and after school club are available.

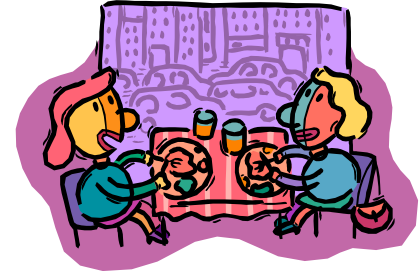


Uniform

- Black or grey trousers/skirt.
- White polo shirt.
- School jumper or cardigan –
- Black school shoes.
- School PE kit (consisting of green t-shirt with logo, black shorts, black tracksuit bottoms, black hoodie, trainers and socks)
- Long hair always tied up with plain accessories
- Please name everything!!



Lunch time



- Three choices everyday – meat, vegetarian or jacket potato.
- Includes a drink and dessert.
- Initially, staff will support the children to encourage them at lunchtime.



Everyday your child will need...

- Coat
- Change(s) of clothes and PE Kit
- Wellies (keep in school)
- Water bottle – just water please.
- Sunhat/Sun cream (in warm weather)
- Green school book bag – reading book daily
- EVERYTHING NAMED!!



Getting ready for School

- Help your child to learn how to **independently** dress and undress themselves; including doing their own zips and buttons.
- Work with your child to ensure they can **independently** go to the toilet, including cleaning themselves up afterwards and washing their hands.
- Work with your child to establish good eating behaviours, e.g: using a knife and fork and feeding themselves, opening packets.
- Read a variety of books to your child including classic fairy tales.



How can you help?

- Be open and honest with us.
- Tell us what your child is learning at home.
- Read with your child every day.
- Coming to help in school.
- Sharing your talents!
- FOH: Friends of Highwood



How we can help you?

- There will be three workshops, two for literacy and one for maths. We will provide you with information on ways that we teach the children in these key areas.
- Homework: at this age, the children are not expected to complete weekly pieces of homework. We send out sheets with the phonics learnt each day for practice at home.
- **Reading** every night is the most important activity for them, as well as supporting them to recognize numbers, shapes and words in their local environment. The emphasis is on fun, so that the children don't realise that they are learning!



Home visits and Settling in

Home visits

- w/b, 7th July, we are doing home visits to parents who are **new** to Highwood.

Settling in

- Children go full time – Thursday
4th September
- Staggered start can be considered if necessary.
- Flexibility – Where Individuals Matter



Thank you for coming!



Questions...?

